



WELCOME

**SALES
MANUAL
2011**

TO THE EXCITING WORLD OF GENTLE GIANTS – HÚSAVÍK ICELAND

What makes our seafaring adventures so memorable? We are owners, captains and management with decades of experience on the North Atlantic seas and our ancestral roots in the community of Húsvík and nearby Skjálfandi Bay. We have been fishing the seas here for centuries—that's an experience you can't find elsewhere.

.... Five generations of pioneering in the bay



**go whale
watching!**

**NEW
PRODUCT**



Bookings & Info

MEMBER OF ICEWHALE
THE ICELANDIC WHALE
WATCHING ASSOCIATION

Tel. +354 464 1500

www.gentlegiants.is

info@gentlegiants.is

SINCE 1860

A Gentle Giant Family

FIVE GENERATIONS IN SKJÁLFANDI BAY



Our Gentle Giant family is a close-knit group. At sea, we rely on each other. Onshore we play, but we also chip in for our local community. The locals are only a few thousand years of evolution away from our whale friends after all! One thing we do is support Völsungur, easily the best football team in the Arctic region and yet another reason for Húsavík to be proud.



Three of the owners of Gentle Giants are members of our fifth generation in the bay: Sædís Helga (15), Aþena Lind (13) and Sylvia Dís (8) are shown here testing out the Zodiac.



Gentle Giants is a proud sponsor and supporter of the local football team Völsungur . . .

When it comes to achieving and creating goals . . . we are there!



Our Company Gentle Giants Whale Watching Ltd.
Proudly supports UNICEF CHILDREN



**SAFETY
FIRST**



Gentle Giants ensures the safety and the security of its passengers



SIGLINGASTOFNUN
Gentle Giants boats and staff are fully-licensed by the Icelandic Maritime Administration.



Gentle Giants staff is trained in Safety and Survival by the Maritime Safety and Survival Training Centre of Iceland.



Our passengers are fully insured by VIS Insurance Ltd.



Gentle Giants Whale Watching is a member of SAF, the Icelandic Travel Industry Association.



Gentle Giants Whale Watching is a partner in the Wild North Project of sustainable tourism.



Gentle Giants Whale Watching is a member of the International Blue Flag eco-label.

Mr & Mrs Feel Good

WE CARE



SPECIAL WARM
overalls available
FREE every day



We care about our passengers' feelings. That is why we offer them protective clothing on board – free of charge. We have cozy, warm overalls in bright safety colors and a wide range of sizes, all especially designed for our excursions to the open sea. We also offer every passenger light refreshments on board our all our boats: Complementary hot chocolate and the traditional Icelandic twisted donut, kleina, to keep you warm and nourished. We want our passengers to have a great experience and FEEL GOOD!!

Specially designed useful things for sale on location at reasonable prices. Different colors available.



LIKE ONE BIG FAMILY

We proudly present our EXPERIENCED TEAM



Stefán Guðmundsson
Managing Director - Captain



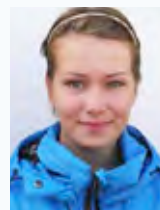
Daniel Annisus
Ass. Director - Guide - Ticket Sales



María Torralba Escobedo
Head Guide - Ticket Sales



Alexia Askelöf
Guide - Ticket Sales



Sigrún Björg Steinþórsdóttir
Guide - Ticket Sales



Peter Walt
Guide



Stefania Þorsteinsdóttir
Guide



Matthías Annisus
Guide



Brynjar Valþórsson
Guide



Vilhjálmur Bessi Kristinnsson
Captain



Óðinn Sigurðsson
Captain



Arnar Sigurðsson
Captain



Hlynur Þór Birgisson
Captain



Hilmar Þór Guðmundsson
Captain



Sigurjón Sigurbjörnsson
Captain



Sigmar Ingólfsson
Captain



Sigurður Kristjánsson
Captain



Sigrún Vala Hauksdóttir
Assistant



Máni Snær Bjarnason
Maintenance



Hallgrímur Egilsson
Marketing

THE CLASSICAL ONE

GG1 • Whale Watching

SEE THE MAMMALS OF THE OCEAN



Experience the traditional tour from Húsavík. Our birthplace is often considered the Whale Watching Capital of Europe. Whale watching is a unique adventure at sea: Gazing at the wonders of nature in the beautiful surroundings of Skjálfandi Bay, sheltered by the stunning mountains of Vík. This is a place where our roots lie, where our ancestors used to live in peace and joy for centuries, living in total harmony with the unpredictable and untamed nature of the North Atlantic.

97-99% sightings the past years

We have added several NEW departures in 2011.

TIMETABLE 2011*

May 1st. - May 31st.	June 1st. - June 30th.	July 1st. - Aug 10th.	Aug 11th. - Aug 31st.	Sept 1st. - Sept 15th.	Sept 16th. - Sept 30th	Oct 1st. - Oct 31st. Sat. - Sun.
		08:45	08:45			
09:45	09:45	09:45	09:45	09:45	09:45	09:45
	12:00	12:00	12:00			
13:15	13:15	13:15	13:15	13:15		
		15:15	15:15			
	16:45	16:45	16:45			
	20:15	20:15				

WE ACCEPT ALL MAJOR CREDIT CARDS AND CURRENCIES

RATES:

Adults: EUR 52 pr. person.
 Children 7–15 years : EUR 20
 Children 0-6 years: FREE
 Each tour takes approx. 3 hours.
 Group discounts and tailor made tours available. See our timetable for daily tours or contact us for further information.

INCLUDED:

A specialized guide, light refreshments (hot chocolate and an Icelandic traditional twisted donut, kleina) and warm extra clothing if needed.

SEASON:

May 1st – Sept 30th
 Daily departures
 Off-season: Oct 1st – Oct 31st**

Other tours, excursions and schedules can be arranged upon request at our Information & Ticket Office.

Early booking is recommended.

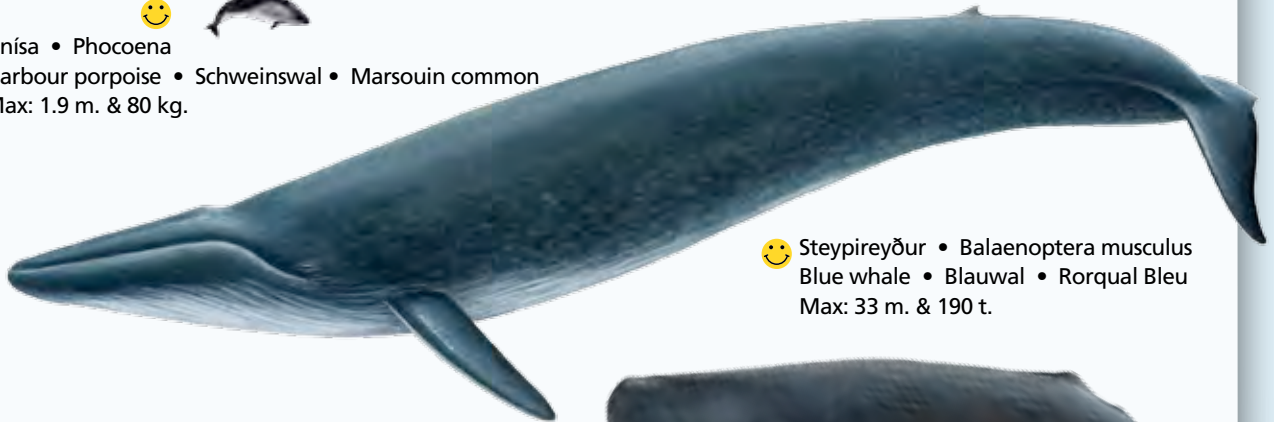
*For your safety and comfort, we reserve the right to change schedules should weather or other conditions change.

** (Sat – Sun only)

Whales of Skjálfandi Bay



Hnísa • Phocoena
Harbour porpoise • Schweinswal • Marsouin common
Max: 1.9 m. & 80 kg.

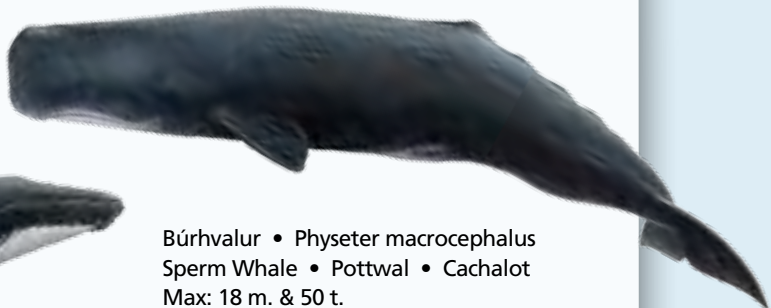


Steypireyður • Balaenoptera musculus
Blue whale • Blauwal • Rorqual Bleu
Max: 33 m. & 190 t.

Hnúfubakur • Megaptera novaeangeliae
Humpback Whale • Buckelwal • Megaptère
Max: 17 m. & 48 t.



Búrhvalur • Physeter macrocephalus
Sperm Whale • Pottwal • Cachalot
Max: 18 m. & 50 t.



Hrefna • Balaenoptera acutorstrata
Minke whale • Zwerqual • Petit rorqual
Max: 11 m. & 10 t.



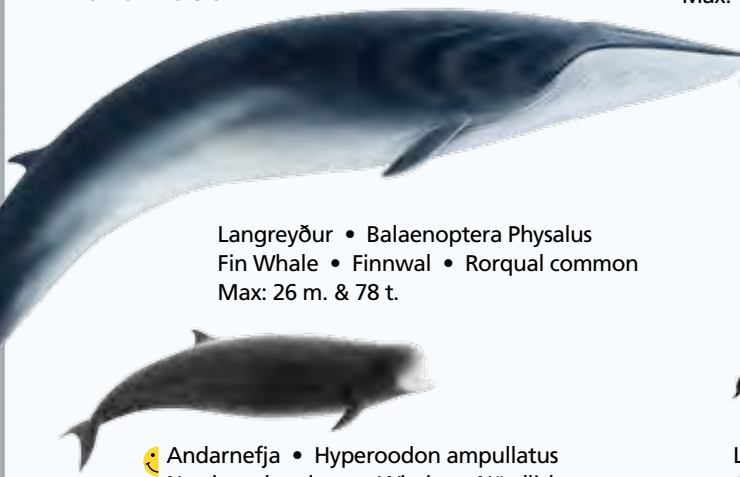
Hnýðingur
• Lagenorhynchus albirostris
White-beaked dolphin
• Weißsnauzendelphin
• Lagènorhynque à bec blanc
Max: 3.1 m. & 350 kg.



Grindhvalur • Globicephala melas
Pilot Whale • Grindwal • Globi cèpale noir
Max: 8 m. & 5 t.



Háhyrningur • Orcinus Orca
Orca / Killer Whale • Schwertwal • Orque
Max: 10 m. & 9 t.



Langreyður • Balaenoptera Physalus
Fin Whale • Finnwal • Rorqual common
Max: 26 m. & 78 t.



Sandreyður • Balaenoptera borealis
Sei Whale • Seival • Rorqual du Nord
Max: 19.5 m. & 26 t.



Andarnefja • Hyperoodon ampullatus
Northern bottlenose Whale • Nördlicher
Entenwal • Hyperoodon boréal
Max: 9 m. & 7,5 t.

Leifturhnyðingur • Lagenorhynchus acutus
Atlantic White-sided dolphin • Weißseitendelphin
• Lagènorhynque à flancs blancs
Max: 2.8 m. & 230 kg.



Most common whales in Skjálfandi Bay

NEW UNIQUE TOUR

GG5 · Pro-Fishing

A UNIQUE AND UNFORGETTABLE EXPERIENCE!



" We spent some very exciting days in Iceland, and the top of it was the day we were fishing in Húsvík!

When we were in Iceland for the first time, we wanted to try working on a fishing boat, but we didn't find any opportunity. It was a great pleasure when we found Gentle Giants on our second trip. We didn't know exactly how much hard work fishing is. We spent 14 hours at sea, very close to the pure nature. We worked hard, and we caught an incredible amount of fish. Fishing is extremely tiring, but an amazing experience. And during the work we saw some killer whales, dolphins, puffins and many other sea birds.

We recommend this trip to anyone who is looking for a unique experience. Thank you very much for this unforgettable experience!"

Juli & Attila from Hungary



NEW UNIQUE TOUR

GG5 · Pro-Fishing

PUT YOURSELF TO THE TEST AND KEEP SMILING



Become an Icelandic fishing pro for a day or two. Daily from April to October, we welcome people to join us as crewmembers on our fishing boats, sharing our extensive knowledge of fishing and the sea to create an unforgettable and traditional Icelandic adventure.

We take our customers out from Húsavík to Skjálfandi Bay on daily professional fishing trips on our fishing boats. From April to May each year you could be a crew member during lumpfish season, or from June to September catch mainly cod. This is a hard-core fishing experience in the real North Atlantic seas for people who love new adventures.

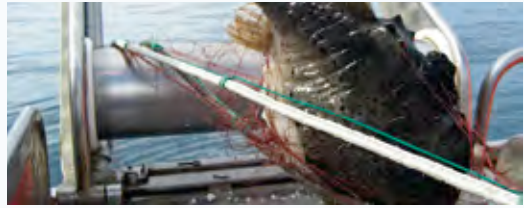
We focus on the exciting and relaxing, adventurous quality of life that can be found in Iceland's beauty and wild nature, using our family's ancestral roots in the history and environment around Húsavík, Skjálfandi Bay, and Flatey Island. We tell our true family story around Skjálfandi Bay and Húsavík, generation after generation, for more than 150 years. We are an original part of the history, fishermen with salty blood running through our veins. Others may wish they had the same tradition, and we want to offer them the salty experience... a real one!

Gentle Giants Pro-Fishing will take you out on the sea with our highly experienced captains and professional crews, showing our customers how we do it and enabling them to test their seaworthiness along with our other crewmembers. This experience is for people who want to put themselves to the test and keep on smiling after a long, tough day.

FISHING	APR	MAY	JUN	JUL	AUG	SEP	OCT
Lumpfish	●	●					
Cod	●	●	●	●	●	●	●
Haddock	●	●	●	●	●	●	●
Pollock	●	●	●	●	●	●	●
Redfish	●	●	●	●	●	●	●
European Plaice	●	●	●	●	●	●	●
Common Dab	●	●	●	●	●	●	●
American Plaice	●	●	●	●	●	●	●
Catfish	●	●	●	●	●	●	●
Leopardfish	●	●	●	●	●	●	●
Whiting	●	●	●	●	●	●	●
Monkfish	●	●	●	●	●	●	●
DIFFICULTY	5	4	3	2	2	3	4

Difficulty levels are calculated by our Marine Experts living in Skjálfandi Bay for decades with vast experience fishing in the bay. The biggest contributor to the difficulty levels is the unpredictable weather conditions.

Primary catch ● Secondary catch ●



1 DAY PRO-FISHING PACKAGE:

EUR 250 pr. person

INCLUDED: A Crewmembers position on one of our fishingboats. Full Pro-Fishing outfit; boots, wp-trousers, wp-jacket, cap, wp-gloves, fleece jacket & woolen socks. A full box with food & drinks for a whole day; the fisherman lunch box. A part of the catch; filleted for own use / restaurant. Different Icelandic weather conditions. 10 – 16 hours of a hard work & adventure; dependant upon catch & weather.

3 DAY PRO-FISHING PACKAGE:

EUR 900 pr. person

Day 1 - Domestic flight RVK – AK
A transfer from AK to Husavik to a Hotel / Guesthouse – free part of the day.

Day 2 – Early departure to the Pro-Fishing grounds – ready for adventure.
Back in the afternoon, unloading the catch & preparing the boat for next day. Shower, swimmingpool or hot tub. Dinner made from the catch of the day.

Day 3 – A guided excursion to the wonders of Lake Myvatn. Visit to the Nature Baths & Restaurant.
Waterfall of the Gods visited on the way, and then to AK airport – flight to RVK.

INCLUDED: A Crewmembers position on one of our fishingboats. Full Pro-Fishing outfit; boots, wp-trousers, wp-jacket, cap, wp-gloves, fleece jacket & woolen socks. A full box with food & drinks for a whole day; the fisherman lunch box. A part of the catch; filleted for own use / restaurant. Different Icelandic weather conditions. 10 – 16 hours of a hard work & adventure; dependant upon catch & weather.

SEASON:

Apr 1st - Oct 31st

Note: We do reserve the rights to change schedule if mother nature is not on our side; weather & other conditions are not as expected.

NEW PUFFIN TOUR

GG6 · Puffins Exclusive

ONE HOUR EXPRESS TOUR

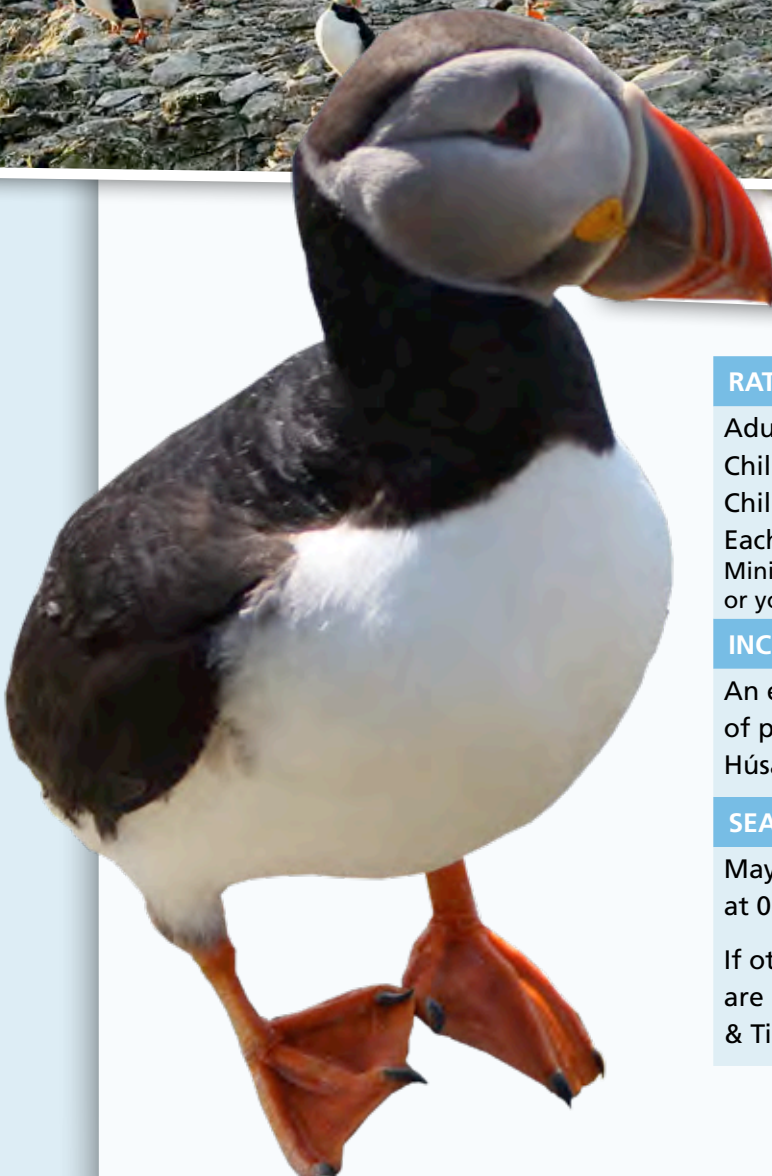


In this Puffins Exclusive Express Tour, we will take you to Lundy Island to see one of the largest Puffin colonies in Iceland.

This Island is only 4.5 nautical miles from Húsavík harbor. It reaches 34m above sea level and is around 200m in length and 100m wide.

During the breeding season there can be found around 300 thousand puffins; close to the rich feeding grounds in the sea around the island.

The Island is privately owned by farmers nearby and we will take you there in only a few minutes by boat for a close look.



RATES:

Adults: EUR 39 pr. person

Children 7–15 years: 50% off

Children 0-6 years: FREE

Each tour takes approx. 1 hour.

Minimum number of five required in a standard tour, or you can rent a boat for your private trip.

INCLUDED:

An experienced captain, warm overalls and loads of puffins and smiles and a little surprise from Húsavík's only winemaker.

SEASON:

May 15th - Aug 10th,
at 09:00, 11:00 & 18:00 hours

If other departures times or arrangements are required, contact us at our Information & Ticket Office.

A MUST TRY

GG2 · Sea Angling

CATCH YOUR OWN MEAL



Experience the exhilarating feeling of catching your own meal out on Skjálfandi Bay's rich fishing grounds. The distance to these rich fishing grounds is very short and the captain will find fish for you to catch. At the end of the trip, your catch, which will probably be cod or haddock, can be filleted by the captain, taken with you for your own cooking or, upon special request, possibly cooked afterwards in a restaurant. Thanks to our experience as professional fishermen with historically strong roots around the bay, on this tour we provide you with a **100% CATCH GUARANTEE!**



**100%
CATCH
GUARANTEE!**

RATES:

Adults: EUR 77 pr. person

Children 0–12 years : 50% off

Each tour takes 2 – 3 hours.

* Minimum number of four required in a standard tour, or you can rent a boat for your private trip.

INCLUDED:

An experienced captain, fishing equipment/rods, and light refreshments (hot chocolate and a traditional Icelandic twisted donut, kleina.)

SEASON:

Apr 1st - Nov 30st, Friday to Sunday
at 10:00 & 18:00 (or upon request)

If other departures times or arrangements are required, contact us at our Information & Ticket Office.



UNIQUE EXPERIENCE

GG3 · Flatey Island

PUFFINS • BIRD WATCHING • WHALES



On your way to Flatey Island, experience the beautiful surroundings of Skjálfandi Bay. Flatey Island is a natural haven for birdlife and is extremely rich and diverse. It therefore attracts many people and tourists each year. The island is home to more than 30 different species of birds during the breeding season.

We offer guided excursions through the island's beautiful nature. The island is home to the Arctic tern and puffins, which you may watch up close. This is an excellent and different experience. From Flatey we head back to Húsavík and sail by the awesome mountains of Vík. If Mother Nature is feeling generous, we may even be able to we may even be able to do some whale watching on our way back! We are also happy to make adjustments to this tour to accommodate any special requests.

FLATEY ISLAND is situated in Skjálfandi Bay, only 14.7 nautical miles NW from Húsavík. The island is about 2.5 km long and 1.7 km wide. It is a low-lying island and its highest peak rises about 22 meters above sea level. That's why it's called "Flat Island." Flatey Island was settled early in historic times and the number of inhabitants increased during the first decades of the 20th century. In 1942, the island reached its peak population of 120.



The inhabitants of Flatey Island mostly earned their living from fishing. The fishing grounds around the island are extremely good, and rich in species such as cod and lumpfish. The island is fertile and well vegetated, so the islanders also practiced agriculture, mostly for their own needs, and each home kept a cow, a few sheep and hens, etc. Several structures were built in Flatey Island while people lived there:

- A schoolhouse was built on the island in 1929.
- The first lighthouse was built in 1913 and rebuilt in 1963.
- A church was built on the island in the early years, but was shut down in 1884. However, in 1960 a new church was consecrated.
- A radio telegraph was put up on the island in 1931.

The community on the island was very active when the population was at its peak. However, it was hard for a small community like Flatey Island to compete with other communities that grew faster once electricity and hot water became available in homes. People started leaving the island and moving to places like Húsavík, and in 1967 the last inhabitants left. It hasn't been permanently inhabited since. However, many people visit the island each summer. Most of the old homes are kept and maintained as summerhouses.



RATES:

Adults: EUR 135 pr. person.*

Children 0–12 years : 50% off

Each tour takes 5 – 6 hours.

* minimum number of six required in this standard tour, or rent a boat for your private trip.

INCLUDED:

A specialized guide, light refreshments (hot chocolate and an Icelandic traditional twisted donut, kleina) and warm extra clothing if needed. Ask for tailor-made tours and arrangements in our Information & Ticket Office.

SEASON:

June 1st - August 10th.

Trips made upon request.

Contact us for further information.

MAN'S BEST SERVANT

GG4 · Whales & Horses

THE ICELANDIC HORSE AND THE WHALE



Experience the combination of traditional whale watching and the Icelandic horse. Explore the countryside close to Húsavík on an Icelandic horse with experienced equestrians at your side. The riding trip begins in Saltvík, which is just four minutes by car from Húsavík harbor, and can be taken either before or after your whale watching tour.

RATES:

Adults: EUR 98 pr. person
Children 0–12 years: 50% off
Each tour will take approx.
3 hours on the boat and
approx. 2 hours on the horse.

INCLUDED:

A specialized guide, light refreshments (hot chocolate and an Icelandic traditional twisted donut, kleina) and warm extra clothing if needed.

SEASON:

May 1st. – October 31st.
See our Whale Watching timetable for daily tours or contact us for further information.

Tailor made tours and other arrangements can be made by contacting our Information & Ticket Office.

BE YOUR OWN BOSS

Gentle Giants Proud Fleet

BOAT CHARTER - FOUR BOATS



Experience private and tailor made tours and private destinations:
Travel yourself in cooperation with our crew. Ideal for individuals, families and groups.
Suggest a trip or route – any idea is a good one – or let us create an itinerary for you.
We want to please you with our service and experience.



m/v SYLVIA

Built in Akureyri 1976
Tonnage: 30
Length: 17.5 m
Beam: 4.3 m
Capacity: 65 pax
EUR 2.455 for 3 hours

Be your own boss

**RENT
A BOAT**
with captain included



m/v FALDUR

Built in Westman Islands 1972
Tonnage: 26
Length: 14.5 m
Beam: 4 m
Capacity: 45 pax
EUR 1.985 for 3 hours



m/v ATHENA

Built in Hafnarfjörður in 2000
Tonnage: 8
Length: 9.5 m
Beam: 3 m
Capacity: 24 pax
EUR 997 for 3 hours

Specialized for sea angling & smaller groups and various activities



m/v AXEL - ZODIAC

Model: 2007
Length: 4.5 m
Beam: 2 m
Capacity: 8 pax
EUR 195 pr. hour

This boat is not equipped for sightseeing, but ideal for camera work, diving & coastal transport / beaches.

Húsavík – Our Hometown



Húsavík is a town in northern Iceland, located on the eastern shore of Skjálfandi Bay. It was first settled in 870 AD by a Swedish Viking, Garðar Svavarsson. According to the Book of Settlement, he is said to have circumnavigated Iceland, discovering it was an island. Garðar spent one winter

in Húsavík before returning to Sweden, leaving one of his men, Náttfari, behind. Náttfari stayed in Iceland with his slaves until he died and is therefore considered to be the first Nordic settler in Iceland. The name Húsavík is one of Iceland's oldest local names.



Like a number of towns on Iceland's coast, the fishing industry has played a vital part in Húsavík's development. The first sources of fishing and fish processing are from the late 19th century. Today 70% of the export income comes from the ocean. Agriculture and farming have also been important for the inhabitants. Many meat and dairy products from Húsavík are appreciated all over the country. Moreover, Iceland's first cooperative was founded in Húsavík in 1882, serving the town and its surroundings.

The residents of Húsavík haven't only got big hearts, but warm ones too. In the region, a lot of geothermal heat can be found and for a long time it has been used to grow vegetables and plants in greenhouses, as well as for heating houses (its primary purpose). The use of geothermal heat offers a variety of opportunities and faces a bright future.

In recent years, yet another trade has grown in Húsavík – the tourist industry. It is the fastest growing sector of the economy. The biggest tourist attraction is whale watching and Húsavík has

Here we are

– LOOKING FORWARD TO SEEING YOU!



become known as the whale watching capital of Europe. Thousands of tourists visit Húsavík annually in the hope of seeing the gentle giants of the ocean. In addition to whale watching tours, the Whale Centre, established in 1997, provides information about the life and habitat of whales around Iceland.

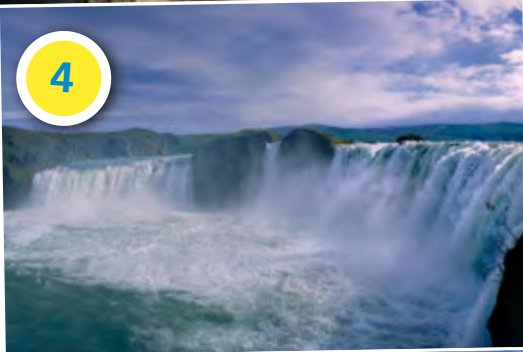
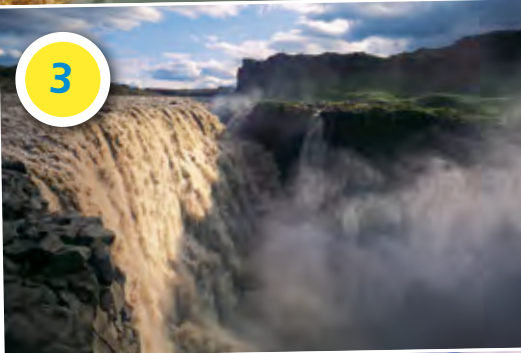
Húsavík's church, built in 1907, is one of the most beautiful churches in Iceland. It is one of the main symbols of Húsavík and is located in the heart of the town. The Húsavík District and Cultural

Museum and the Icelandic Phallological Museum are also located in the town center and worth a visit. In the same region, many of Iceland's greatest natural wonders can be visited, including Lake Mývatn, Dettifoss waterfall, Flatey Island, and Ásbyrgi canyon.

With a total population of 2,680, Húsavík is rich with culture and activities. Great sporting facilities are available, as well other activities. One of the major events in Húsavík is Mærudagar (Candy Days), a local festival held each year in summer.



Diamonds around the corner



1 Flatey Island (60 minutes)

FLATEY ISLAND is situated in Skjálfandi Bay, only 14.7 nautical miles from Húsavík. The island is about 2.5 km long and 1.7 km wide, and is low-lying. The highest peak rises about 22 meters above sea level. That's why it's called Flat Island.

2 Ásbyrgi canyon (40 minutes)

A natural marvel, Ásbyrgi is surrounded by 90- to 100-meter cliffs. According to legend, Ásbyrgi is a hoof print made by Sleipnir, the horse of Óðinn, the greatest of all Nordic gods. Ásbyrgi is a part of Vatnajökull National Park and is ideal territory for walking and hiking, although it cannot be explored to its full extent on foot.

3 Dettifoss waterfall (65 minutes)

Dettifoss is considered the most impressive waterfall in Europe. It is 45 meters high and 100 meters wide. Below it in the Jökulsá River is Hafragilsfoss waterfall (27 m) and above it is Selfoss waterfall (10m). These waterfalls form a unity unparalleled in the world. There is a marked walking path from Dettifoss to Hafragilsfoss.

4 Goðafoss waterfall (30 minutes)

Literally, waterfall of the gods! Waterfall on the river Skjálfandaflijtót, not far from the main road at Fosshóll in Bárðardalur valley. The waterfall can be viewed from several places, and the river enters a chasm beneath it.

5 Lake Mývatn (40 minutes)

Lake Mývatn is a unique source of endless discoveries and no visitor to Iceland should leave without having spent a day here. It is the fourth-largest lake in Iceland, measuring 37.3 km². Frequent lava flows have left the lake very irregular in shape, and it is dotted with many islets and rock formations.

Environmental Policy



Our environmental policy reflects Gentle Giants' long-time experience and commitment to all aspects of conservation, protecting the environment and treating nature with respect. This policy is our answer to the increasing demand from our customers and global organizations for companies like Gentle Giants Whale Watching who support and contribute to the eco-system and sustainable tourism worldwide.

- GG is willing to fulfill every customer's needs, without threatening nature's present and future possibilities.
- GG only operates traditional Icelandic fishing boats that have been renovated for their current purpose. We make a special effort to protect and maintain vessels with cultural and historical importance.
- GG uses environmentally friendly products and eco-labels are preferably used for repair and maintenance of hulls and engines.
- GG uses recyclable products. The use of single use products is avoided as much as possible.
- GG puts a great emphasis on delivering all hazardous and toxic waste such as oil, paint and used batteries to assigned official collecting sites.
- GG immediately notifies the relevant authorities about any accidents that might cause environmental damage from our boats or from others.
- GG staff is updated regularly about the environmental policy of the company to include all new aspects of protecting the environment.
- GG puts effort in energy efficiency regarding the output and speed of our engines, in order to minimize pollution and disturbance in wildlife. Special precautions are taken near whales and breeding birds.
- GG always shows great caution when leaving and entering the harbor area.
- GG believes that principles in sustainability refer to three major factors: the environmental factor, the economic factor and social cultural aspects of tourism development. A suitable balance must be established between these factors in order to reach a long-term optimal use of nature's resources in the ecological process.
- GG informs passengers on its vessels of the great importance of protecting the environment in the area, its outstanding marine wildlife, stunning scenery and the air that we breathe.
- We are a proud member of the international eco-label Blue Flag.

On behalf of Gentle Giants Whale Watching
Stefán Guðmundsson – General Manager.



UNIQUE EXPERIENCE

Gentle Giants tour map

WHALES • FISHES • PUFFINS • BIRDS • HORSES

SKJÁLFAÐI BAY

Just look for the **BIG BLUE FLAGS**

FLATEY island

LUNDEY island



HÚSAVÍK

See ya!



- GG1 • Whale Watching
- GG2 • Fishing
- GG3 • Flatey Island
- GG4 • Whales and Horses
- NEW** • Pro-Fishing
- NEW** • Puffin Exclusive